



ADA Station Relocator

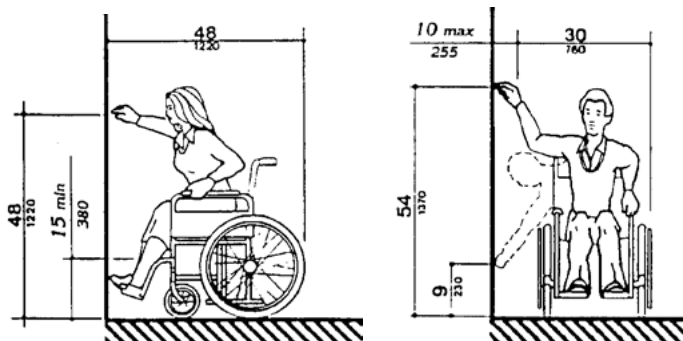
Model RR-32RL



Overview

The Manual Station Relocator is designed to lower the height of a fire alarm pull station to meet ADA requirements. Most existing pull stations are mounted 60 inches (1524 mm) or higher above the floor. The Relocator lowers the height without the need for pulling new wires and moving the existing electric box.

The Relocator is the easiest and most economical way to lower existing pull stations. Simply remove the existing pull station from the wall. Connect field wiring to Relocator terminals. Reconnect the existing (or new) pull station to wire leads on the front of the Relocator. The Relocator is made from rugged aluminum and finished with an attractive beige finish. A large blue/white wheelchair decal is applied to the front to clearly indicate pull station accessibility.



Standard Features

- **ADA compliant**
Meets physical requirements for ADA devices.
- **Universal design**
Compatible with most brands of pull stations.
- **Fast installation**
The simple design ensures very fast, very easy installation.
- **Screw terminal wire connection**
Large terminals help speed installation; accepts up to #12 AWG (2.5mm²) wire.
- **One-gang mounting**
- **UL listed**

Application

ADA requires that pull stations be mounted 54 inches (1370 mm) off the finished floor for wheelchair side access and 48 inches (1220 mm) for front access.

To fully comply with ADA you must use a pull station that is certified to operate with 5 lb pull or less. Edwards manual pull stations meet this criteria.

The Relocator is designed for indoor use only.



Detection & alarm since 1872

U.S.
 T 888-378-2329
 F 866-503-3996

Canada
 Chubb Edwards
 T 519 376 2430
 F 519 376 7258

Southeast Asia
 T : +65 6391 9300
 F : +65 6391 9306

India
 T : +91 80 4344 2000
 F : +91 80 4344 2050

Australia
 T +61 3 9239 1200
 F +61 3 9239 1299

Europe
 T +32 2 725 11 20
 F +32 2 721 86 13

Latin America
 T 305 593 4301
 F 305 593 4300

utcfireandsecurity.com

© 2010 UTC Fire & Security.
 All rights reserved.

Installation and Mounting

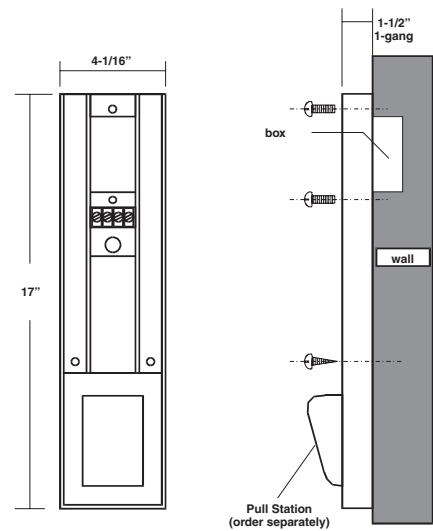
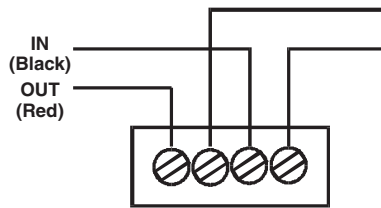
To install, simply remove the existing station from the wall, attach the Relocator to the electric box and attach the field wires to the terminal block in the back of the Relocator.

Edwards recommends that fire alarm systems and devices always be installed in accordance with the latest recognized edition of national and local fire alarm codes.

Compatible Edwards Manual Stations:

Wire lead models only; maximum 1⁷/₁₆-inch deep.

Typical Wiring



Specifications

Construction	Aluminum with beige paint finish
Markings	Supplied with large blue/white wheelchair decal
Field Wire Connections	Terminals - #12 AWG (2.5mm ²) maximum
Operating Environment	85% @ 30°C relative humidity; 32-120°F (0-49°C) ambient temperature
Mounting	Mounts to flush one-gang electric box
Agency Listings	UL (All models comply with ADA Code of Federal Regulation Chapter 28 Part 36 Final Rule)

Ordering Information

Pull station not included. Order separately.

Catalog Number	Description	Ship Wt. - lb (kg)
RR-32RL	Pull Station Relocator	1 (0.4)